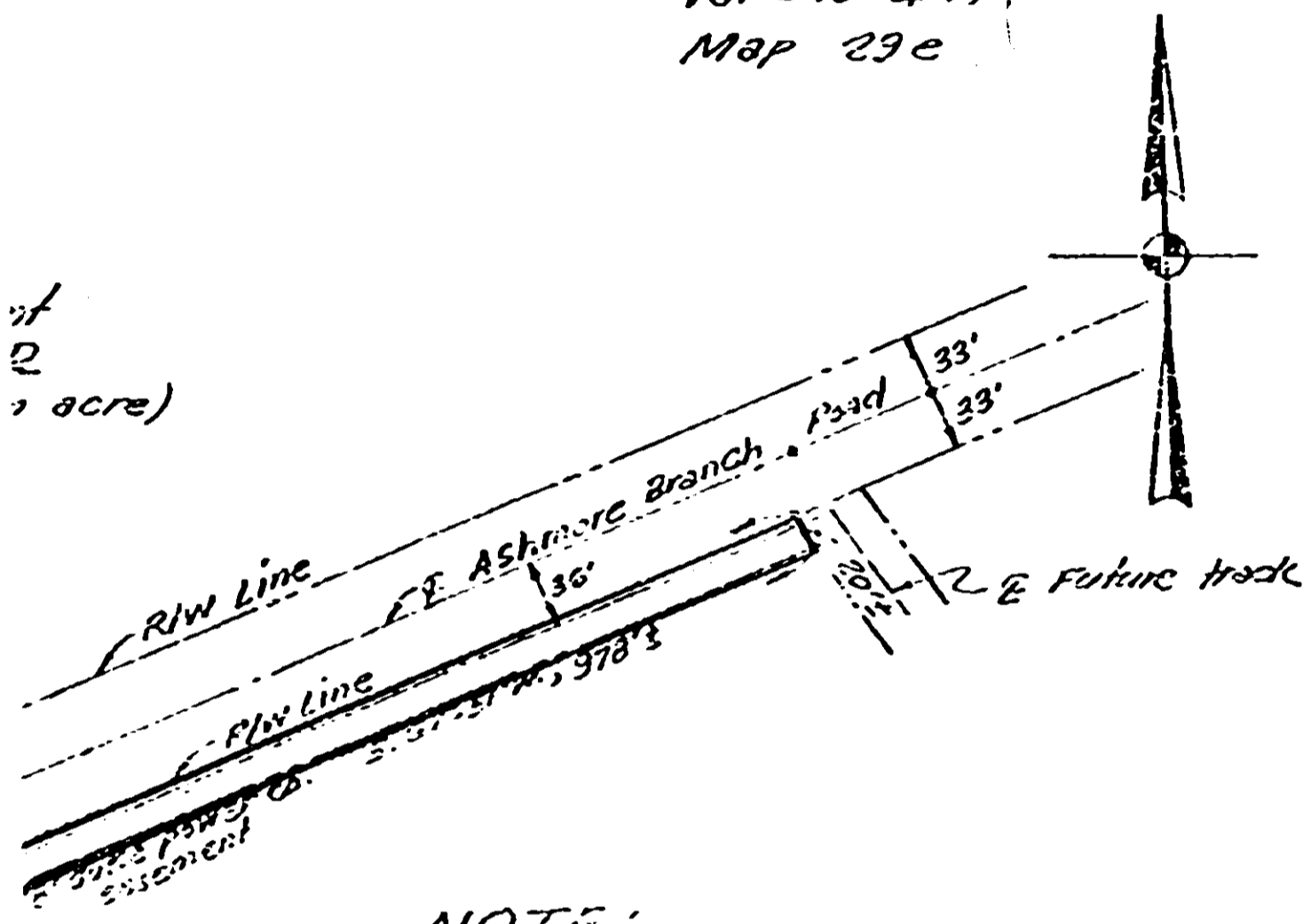


B 2 2 0

GREENVILLE CO., S.C. 141 PAGE 278
Vol 5:0. 44,
Map 29e

of
2
acre)



NOTE:

Provide adequate vertical clearances for the future tracks: (T/R = Ra. elev t)

- a) Elec. lines < 750 Volts = 30'
- b) " " 750-15000 " = 31'
- c) " " 15,000-50,000 " = 33'

For higher voltage consult the latest revision of National Electric Safety Code.

SOUTHERN RAILWAY SYSTEM

GREENVILLE, S.C.
Prepared by
R. L. ...

653 Co. (S.P.)

MAR 20 1981
at 11:30 A.M.

20511

TR-30-0915

4323 RV.2